



UniFi[®] AC

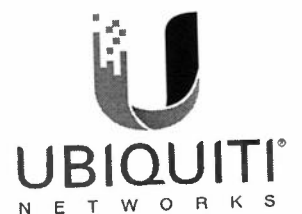
802.11AC Dual-Radio Access Points

Models: UAP-AC-IW, UAP-AC-IW-PRO, UAP-AC-LITE,
UAP-AC-LR, UAP-AC-PRO, UAP-AC-EDU

Unlimited Indoor/Outdoor AP Scalability in a Unified Management System

Breakthrough Speeds up to 1300 Mbps in the 5 GHz Band

Intuitive UniFi Controller Software





Scalable Enterprise Wi-Fi Management

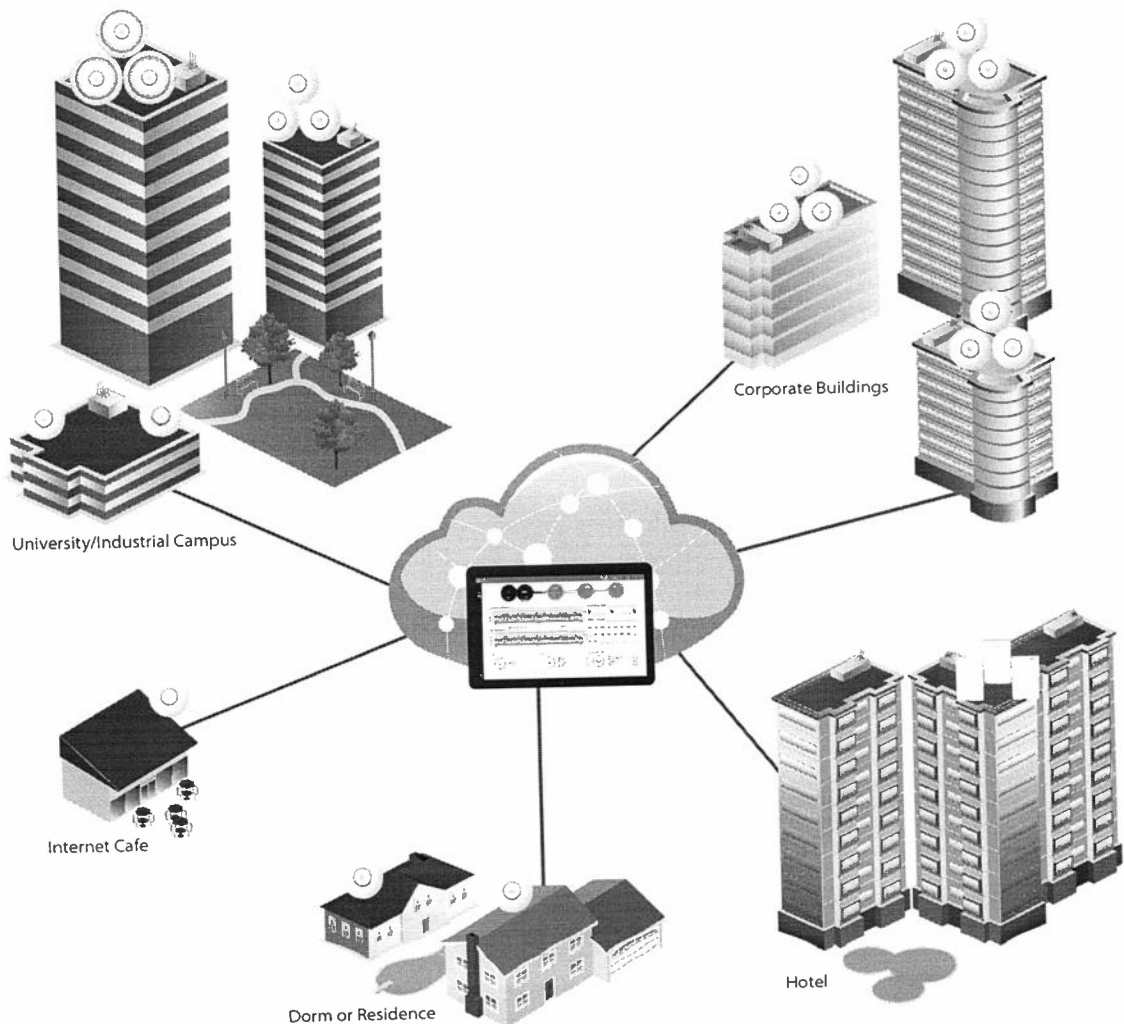
UniFi[®] is the revolutionary Wi-Fi system that combines enterprise performance, unlimited scalability, and a central management controller. UniFi 802.11AC Dual-Radio Access Points (APs) have a refined industrial design and can be easily installed using the included mounting hardware.

Easily accessible through any standard web browser and the UniFi mobile app (iOS or Android), the UniFi Controller software is a powerful software engine ideal for high-density client deployments requiring low latency and high uptime performance.

Use the UniFi Controller software to quickly configure and administer an enterprise Wi-Fi network – no special training required. RF map and performance features, real-time status, automatic UAP device detection, and advanced security options are all seamlessly integrated.

Extend Your Coverage

With the UniFi Controller software running in a NOC or in the cloud, administrators can manage multiple sites: multiple, distributed deployments and multi-tenancy for managed service providers. Below are some deployment examples.



Features

Save Money and Save Time Unlike traditional enterprise Wi-Fi systems that use a hardware controller, UniFi comes bundled with a non-dedicated software controller that can be deployed on an on-site PC, Mac, or Linux machine; in a private cloud; or using a public cloud service.

Powerful Hardware The UniFi 802.11AC Dual-Radio APs feature the latest in Wi-Fi 802.11AC MIMO technology.

Intuitive UniFi Controller Software Configure and manage your APs with the easy-to-learn user interface.

Expandable Unlimited scalability: build wireless networks as big or small as needed. Start with one (or upgrade to a three-pack) and expand to thousands while maintaining a single unified management system.

UniFi Controller

Packed with Features

Use the UniFi Controller to provision thousands of UniFi APs, map out networks, quickly manage system traffic, and provision additional UniFi APs.

Breakthrough RF Map

Use the RF map to monitor and analyze radio frequencies for optimal AP placement, configuration, and troubleshooting.

Powerful RF Performance Features

Advanced RF performance and configuration features include spectral analysis, airtime fairness, and band steering.

Detailed Analytics

Use the configurable reporting and analytics to manage large user populations and expedite troubleshooting.

Wireless Uplink

Wireless Uplink functionality enables wireless connectivity between APs for extended range. One wired UniFi AP uplink supports up to four wireless downlinks on a single operating band, allowing wireless adoption of devices in their default state and real-time changes to network topology.

Guest Portal/Hotspot Support

Easy customization and options for Guest Portals include authentication, Hotspot setup, and the ability to use your own external portal server. Use UniFi's rate limiting for your Guest Portal/Hotspot package offerings. Apply different bandwidth rates (download/upload), limit total data usage, and limit duration of use.

All UniFi APs include Hotspot functionality:

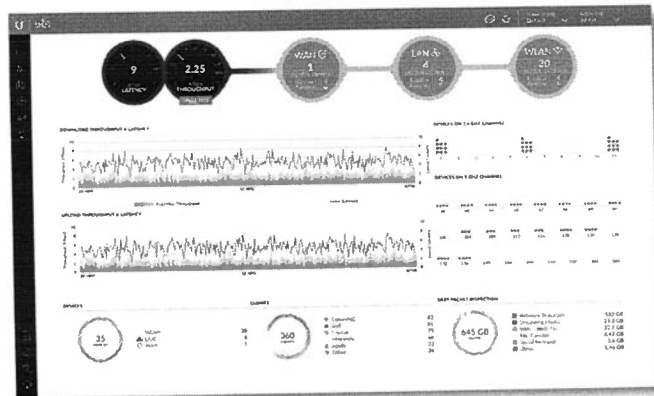
- Built-in support for billing integration using major credit cards.
- Built-in support for voucher-based authentication.
- Built-in Hotspot Manager for voucher creation, guest management, and payment refunds.
- Full customization and branding of Hotspot portal pages.

Multi-Site Management

A single UniFi Controller running in the cloud can manage multiple sites: multiple, distributed deployments and multi-tenancy for managed service providers. Each site is logically separated and has its own configuration, maps, statistics, guest portal, and administrator read/write and read-only accounts.

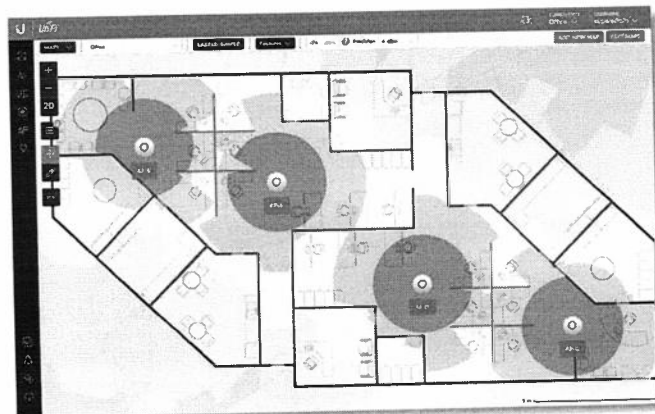
WLAN Groups

The UniFi Controller can manage flexible configurations of large deployments. Create multiple WLAN groups and assign them to an AP's radio.



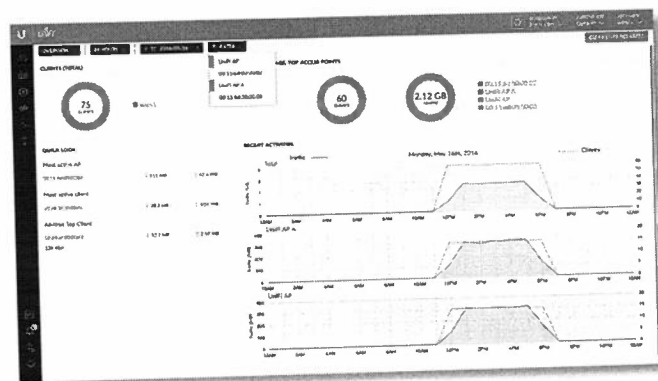
Dashboard

UniFi provides a visual representation of your network's status and delivers basic information about each network segment.



RF Map

Monitor UniFi APs and analyze the surrounding RF environment.



Statistics

UniFi visualizes network traffic in clear and easy-to-read graphs.



UniFi Mobile App

Manage your UniFi devices from your smartphone or tablet.

Models

Hardware Overview

Easy Mounting Sleek design for seamless integration into any environment (all accessories included).

LED Unique provisioning and status LED provides administrator location tracking and alerts for each device.

Designed for the Great Outdoors The UniFi AC Pro features weatherproof casing designed specifically for outdoor applications.

Advanced Acoustic Speaker The UniFi AC EDU AP provides high-quality sound with accurate voice reproduction for announcements over Wi-Fi.

Power over Ethernet (PoE) Includes PoE functionality. Each single-pack – except for the UniFi AC In-Wall AP, In-Wall Pro AP, and Pro AP – includes a PoE adapter.

PoE Switching

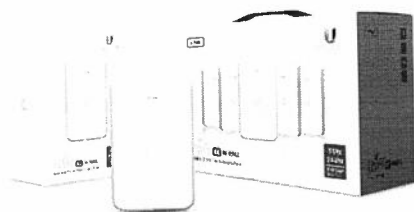
UniFi Switch with PoE You can power your UniFi devices with a UniFi PoE Switch (sold separately). Available in 8, 16, 24, and 48-port versions with multiple power output options, the UniFi PoE Switch conveniently offers auto-sensing IEEE 802.3af PoE/802.3at PoE+.



PoE Standards The UniFi AC EDU, In-Wall, In-Wall Pro, and Pro APs are compatible with an 802.3at PoE+ compliant switch. The UniFi AC Pro AP can also use 802.3af PoE.

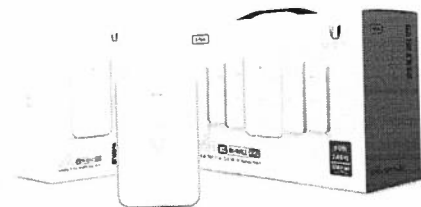
Model Comparison Chart

	UAP-AC-IW	UAP-AC-IW-PRO	UAP-AC-LITE	UAP-AC-LR	UAP-AC-PRO	UAP-AC-EDU
Environment	Indoor	Indoor	Indoor	Indoor	Indoor/Outdoor	Indoor
Simultaneous Dual-Band	✓	✓	✓	✓	✓	✓
2.4 GHz Radio Rate	300 Mbps	450 Mbps	300 Mbps	450 Mbps	450 Mbps	450 Mbps
2.4 GHz MIMO	2x2	3x3	2x2	3x3	3x3	3x3
5 GHz Radio Rate	867 Mbps	1300 Mbps	867 Mbps	867 Mbps	1300 Mbps	1300 Mbps
5 GHz MIMO	2x2	3x3	2x2	2x2	3x3	3x3
Secondary Ethernet Port	✓ (2 Additional Ports)	✓ (2 Additional Ports)			✓	✓
Loudspeaker						✓
PoE Mode	802.3at PoE+	802.3at PoE+	802.3af/A PoE 24V Passive PoE	802.3af/A PoE 24V Passive PoE	802.3af PoE 802.3at PoE+	802.3at PoE+
Ceiling Mount			✓	✓	✓	✓
Wall Mount	✓	✓	✓	✓	✓	✓
Wireless Uplink	✓	✓	✓	✓	✓	✓
DFS Certification	✓	✓	✓	✓	✓	✓



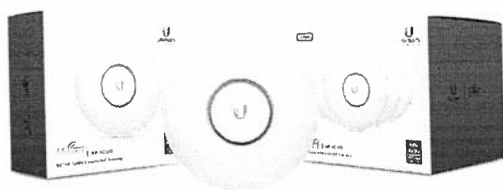
UAP-AC-IW

The UniFi AC In-Wall AP transforms an Ethernet wall connection into a dual-band 802.11AC Wi-Fi Access Point. It features two Gigabit Ethernet ports, one of which delivers PoE to power and connects an 802.3af device to the network. The UniFi AC In-Wall AP provides simultaneous, dual-band, 2x2 MIMO technology and is available in single- and five-packs¹.



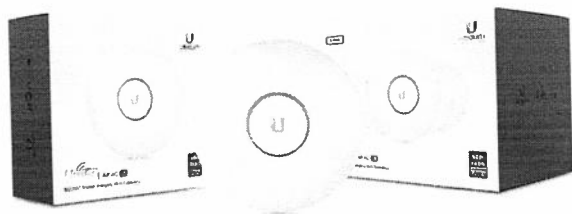
UAP-AC-IW-PRO

The UniFi AC In-Wall Pro AP transforms an Ethernet wall connection into a simultaneous, dual-band 802.11AC Wi-Fi Access Point with 3x3 MIMO technology and 50% higher radio rates than the UAP-AC-IW. The UniFi AC In-Wall Pro features two Gigabit Ethernet ports, one of which delivers PoE to power and connects an 802.3af device to the network. It is available in single- and five-packs¹.



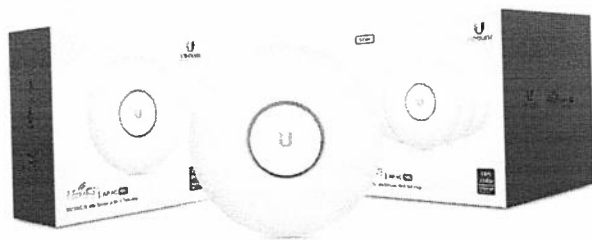
UAP-AC-LITE

Featuring an ultra-compact design, the UniFi AC Lite AP delivers a cost-effective combination of value and performance in a reduced footprint: 25% smaller than the standard UniFi AP. The UniFi AC Lite AP provides simultaneous, dual-band, 2x2 MIMO technology and is available in single- and five-packs².



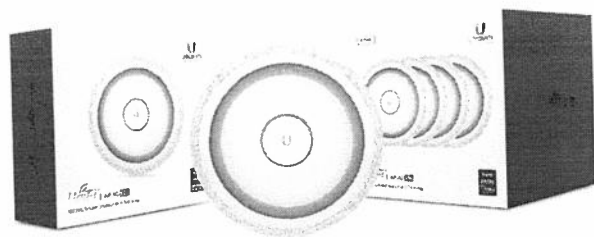
UAP-AC-LR

Ideal for long-range deployments, the UniFi AC LR AP offers simultaneous, dual-band operation with 3x3 MIMO in the 2.4 GHz band and 2x2 MIMO in the 5 GHz band. The innovative antenna design provides a long-range, symmetrical-link coverage area, and the antenna gain of the UniFi AC LR AP performs better than one-way, high transmit power does for connecting distant clients. It is available in single- and five-packs².



UAP-AC-PRO

Deploy the UniFi AC Pro AP indoors or outdoors, in wireless networks requiring maximum performance. Sporting a weatherproof design, the UniFi AC Pro AP features simultaneous, dual-band, 3x3 MIMO technology and convenient 802.3af PoE/802.3at PoE+ compatibility. It is available in single- and five-packs¹.



UAP-AC-EDU

The UniFi AC EDU AP conveniently integrates Wi-Fi and public address capabilities, making it ideal for campus-wide deployment. The UniFi AC EDU AP features simultaneous, dual-band, 3x3 MIMO technology and convenient 802.3at PoE+ compatibility. It is available in single- and four-packs².

- ¹ We recommend powering the UniFi APs with the UniFi PoE Switch, as PoE adapters are not included.
- ² Four- and five-packs do not ship with PoE adapters; we recommend powering the UniFi APs with the UniFi PoE Switch instead.

UAP-AC-IW Specifications

UAP-AC-IW	
Dimensions	139.7 x 86.7 x 25.75 mm (5.5 x 3.41 x 1.01")
Weight	200 g (6.43 oz)
Networking Interface	(3) 10/100/1000 Ethernet Ports
Buttons	Reset
Power Method	802.3at PoE+ Supported
Power Supply	UniFi PoE Switch (Not Included)
Power Save	Supported
PoE Out	48V Pass-Through (Pins 1, 2+; 3, 6-)
Maximum Power Consumption with PoE Passthrough	7W 19W*
Maximum TX Power	20 dBm
2.4 GHz	20 dBm
5 GHz	
Antennas	(1) Dual-Band Antenna, Single-Polarity
2.4 GHz	1 dBi
5 GHz	2 dBi
Wi-Fi Standards	802.11 a/b/g/n/r/k/v/ac
Wireless Security	WEP, WPA-PSK, WPA-Enterprise (WPA/WPA2, TKIP/AES)
BSSID	Up to 8 per Radio
Mounting	1-Gang Electrical Wall Box (Not Included)
Operating Temperature	-10 to 50° C (14 to 122° F)
Operating Humidity	5 to 95% Noncondensing
Certifications	CE, FCC, IC

* Requires 802.3at PoE+ switch

Advanced Traffic Management	
VLAN	802.1Q
Advanced QoS	Per-User Rate Limiting
Guest Traffic Isolation	Supported
WMM	Voice, Video, Best Effort, and Background
Concurrent Clients	250+

Supported Data Rates (Mbps)	
Standard	Data Rates
802.11ac	6.5 Mbps to 867 Mbps (MCS0 - MCS9 NSS1/2, VHT 20/40/80)
802.11n	6.5 Mbps to 300 Mbps (MCS0 - MCS15, HT 20/40)
802.11a	6, 9, 12, 18, 24, 36, 48, 54 Mbps
802.11g	6, 9, 12, 18, 24, 36, 48, 54 Mbps
802.11b	1, 2, 5.5, 11 Mbps

UAP-AC-IW-PRO Specifications



UAP-AC-IW-PRO	
Dimensions	139.7 x 86.7 x 25.75 mm (5.5 x 3.41 x 1.01")
Weight	210 g (7.41 oz)
Networking Interface	(3) 10/100/1000 Ethernet Ports
Buttons	Reset
Power Method	802.3at PoE+ Supported
Power Supply	UniFi PoE Switch (Not Included)
Power Save	Supported
PoE Out	48V Pass-Through (Pins 1, 2+; 3, 6-)
Maximum Power Consumption with PoE Passthrough	10W 22W*
Maximum TX Power	
2.4 GHz	22 dBm
5 GHz	22 dBm
Antennas	(1) Dual-Band Antenna, Single-Polarity
2.4 GHz	5 dBi
5 GHz	6.5 dBi
Wi-Fi Standards	802.11 a/b/g/n/r/k/v/ac
Wireless Security	WEP, WPA-PSK, WPA-Enterprise (WPA/WPA2, TKIP/AES)
BSSID	Up to 8 per Radio
Mounting	1-Gang Electrical Wall Box (Not Included)
Operating Temperature	-10 to 50° C (14 to 122° F)
Operating Humidity	5 to 95% Noncondensing
Certifications	CE, FCC, IC

* Requires 802.3at PoE+ switch

Advanced Traffic Management	
VLAN	802.1Q
Advanced QoS	Per-User Rate Limiting
Guest Traffic Isolation	Supported
WMM	Voice, Video, Best Effort, and Background
Concurrent Clients	250+

Supported Data Rates (Mbps)	
Standard	Data Rates
802.11ac	6.5 Mbps to 1300 Mbps (MCS0 - MCS9 NSS1/2/3, VHT 20/40/80)
802.11n	6.5 Mbps to 450 Mbps (MCS0 - MCS15, HT 20/40)
802.11a	6, 9, 12, 18, 24, 36, 48, 54 Mbps
802.11g	6, 9, 12, 18, 24, 36, 48, 54 Mbps
802.11b	1, 2, 5.5, 11 Mbps

UAP-AC-LITE Specifications

UAP-AC-LITE	
Dimensions	160 x 160 x 31.45 mm (6.30 x 6.30 x 1.24")
Weight	170 g (6.0 oz)
With Mounting Kits	185 g (6.5 oz)
Networking Interface	(1) 10/100/1000 Ethernet Port
Buttons	Reset
Power Method	802.3af/A PoE 24V Passive PoE (Pairs 4, 5+; 7, 8 Return)
Power Supply	24V, 0.5A Gigabit PoE Adapter*
Power Save	Supported
Maximum Power Consumption	6.5W
Maximum TX Power	20 dBm
2.4 GHz	20 dBm
5 GHz	
Antennas	(2) Dual-Band Antennas, 3 dBi Each
Wi-Fi Standards	802.11 a/b/g/n/r/k/v/ac
Wireless Security	WEP, WPA-PSK, WPA-Enterprise (WPA/WPA2, TKIP/AES)
BSSID	Up to 8 per Radio
Mounting	Wall/Ceiling (Kits Included)
Operating Temperature	-10 to 70° C (14 to 158° F)
Operating Humidity	5 to 95% Noncondensing
Certifications	CE, FCC, IC

* Only the single-pack of the UAP-AC-LITE includes a PoE adapter.

Advanced Traffic Management	
VLAN	802.1Q
Advanced QoS	Per-User Rate Limiting
Guest Traffic Isolation	Supported
WMM	Voice, Video, Best Effort, and Background
Concurrent Clients	250+

Supported Data Rates (Mbps)	
Standard	Data Rates
802.11ac	6.5 Mbps to 867 Mbps (MCS0 - MCS9 NSS1/2, VHT 20/40/80)
802.11n	6.5 Mbps to 300 Mbps (MCS0 - MCS15, HT 20/40)
802.11a	6, 9, 12, 18, 24, 36, 48, 54 Mbps
802.11g	6, 9, 12, 18, 24, 36, 48, 54 Mbps
802.11b	1, 2, 5.5, 11 Mbps

UAP-AC-LR Specifications

UAP-AC-LR	
Dimensions	175.7 x 175.7 x 43.2 mm (6.92 x 6.92 x 1.70")
Weight	240 g (8.5 oz)
With Mounting Kits	315 g (11.1 oz)
Networking Interface	(1) 10/100/1000 Ethernet Port
Buttons	Reset
Power Method	802.3af/A PoE 24V Passive PoE (Pairs 4, 5+; 7, 8 Return)
Power Supply	24V, 0.5A Gigabit PoE Adapter*
Power Save	Supported
Maximum Power Consumption	6.5W
Maximum TX Power	24 dBm
2.4 GHz	22 dBm
5 GHz	
Antennas	(1) Dual-Band Antenna, Tri-Polarity, 2.4 GHz: 3 dBi, 5 GHz: 3 dBi
Wi-Fi Standards	802.11 a/b/g/n/r/k/v/ac
Wireless Security	WEP, WPA-PSK, WPA-Enterprise (WPA/WPA2, TKIP/AES)
BSSID	Up to 8 per Radio
Mounting	Wall/Ceiling (Kits Included)
Operating Temperature	-10 to 70° C (14 to 158° F)
Operating Humidity	5 to 95% Noncondensing
Certifications	CE, FCC, IC

* Only the single-pack of the UAP-AC-LR includes a PoE adapter.

Advanced Traffic Management	
VLAN	802.1Q
Advanced QoS	Per-User Rate Limiting
Guest Traffic Isolation	Supported
WMM	Voice, Video, Best Effort, and Background
Concurrent Clients	250+

Supported Data Rates (Mbps)	
Standard	Data Rates
802.11ac	6.5 Mbps to 867 Mbps (MCS0 - MCS9 NSS1/2, VHT 20/40/80)
802.11n	6.5 Mbps to 450 Mbps (MCS0 - MCS23, HT 20/40)
802.11a	6, 9, 12, 18, 24, 36, 48, 54 Mbps
802.11g	6, 9, 12, 18, 24, 36, 48, 54 Mbps
802.11b	1, 2, 5.5, 11 Mbps

UAP-AC-PRO Specifications

UAP-AC-PRO	
Dimensions	196.7 x 196.7 x 35 mm (7.74 x 7.74 x 1.38")
Weight	350 g (12.4 oz)
With Mounting Kits	450 g (15.9 oz)
Networking Interface	(2) 10/100/1000 Ethernet Ports
Port	(1) USB 2.0 Port
Buttons	Reset
Power Method	Passive Power over Ethernet (48V), 802.3af/802.3at Supported (Supported Voltage Range: 44 to 57VDC)
Power Supply	UniFi Switch (PoE)
Power Save	Supported
Maximum Power Consumption	9W
Maximum TX Power	22 dBm
2.4 GHz	22 dBm
5 GHz	
Antennas	(3) Dual-Band Antennas, 2.4 GHz: 3 dBi, 5 GHz: 3 dBi
Wi-Fi Standards	802.11 a/b/g/n/r/k/v/ac
Wireless Security	WEP, WPA-PSK, WPA-Enterprise (WPA/WPA2, TKIP/AES)
BSSID	Up to 8 per Radio
Mounting	Wall/Ceiling (Kits Included)
Operating Temperature	-10 to 70° C (14 to 158° F)
Operating Humidity	5 to 95% Noncondensing
Certifications	CE, FCC, IC

Advanced Traffic Management	
VLAN	802.1Q
Advanced QoS	Per-User Rate Limiting
Guest Traffic Isolation	Supported
WMM	Voice, Video, Best Effort, and Background
Concurrent Clients	125+

Supported Data Rates (Mbps)	
Standard	Data Rates
802.11ac	6.5 Mbps to 1300 Mbps (MCS0 - MCS9 NSS1/2/3, VHT 20/40/80)
802.11n	6.5 Mbps to 450 Mbps (MCS0 - MCS23, HT 20/40)
802.11a	6, 9, 12, 18, 24, 36, 48, 54 Mbps
802.11g	6, 9, 12, 18, 24, 36, 48, 54 Mbps
802.11b	1, 2, 5.5, 11 Mbps

UAP-AC-EDU Specifications

UAP-AC-EDU	
Dimensions	287.5 x 287.5 x 125.9 mm (11.32 x 11.32 x 4.96")
Weight	1.820 kg (4.012 lb)
Networking Interface	Dual-Band Wi-Fi / Gigabit Ethernet
Ports	(2) 10/100/1000 Ethernet Ports (1) USB 2.0 Port
Buttons	Reset
Power Method	Passive Power over Ethernet (48V), 802.3at Supported (Supported Voltage Range: 44 to 57VDC)
Power Supply	48V, 0.5A PoE Gigabit Adapter*
Power Save	Supported
Maximum Power Consumption	20W
Maximum TX Power	22 dBm
2.4 GHz	22 dBm
5 GHz	
Antennas	(3) Dual-Band Antennas, 2.4 GHz: 3 dBi, 5 GHz: 3 dBi
Wi-Fi Standards	802.11 a/b/g/n/r/k/v/ac
Wireless Security	WEP, WPA-PSK, WPA-Enterprise (WPA/WPA2, TKIP/AES)
BSSID	Up to 8 per Radio
Mounting	Wall/Ceiling (Kits Included)
Operating Temperature	-10 to 70° C (14 to 158° F)
Operating Humidity	5 to 95% Noncondensing
Certifications	CE, FCC, IC

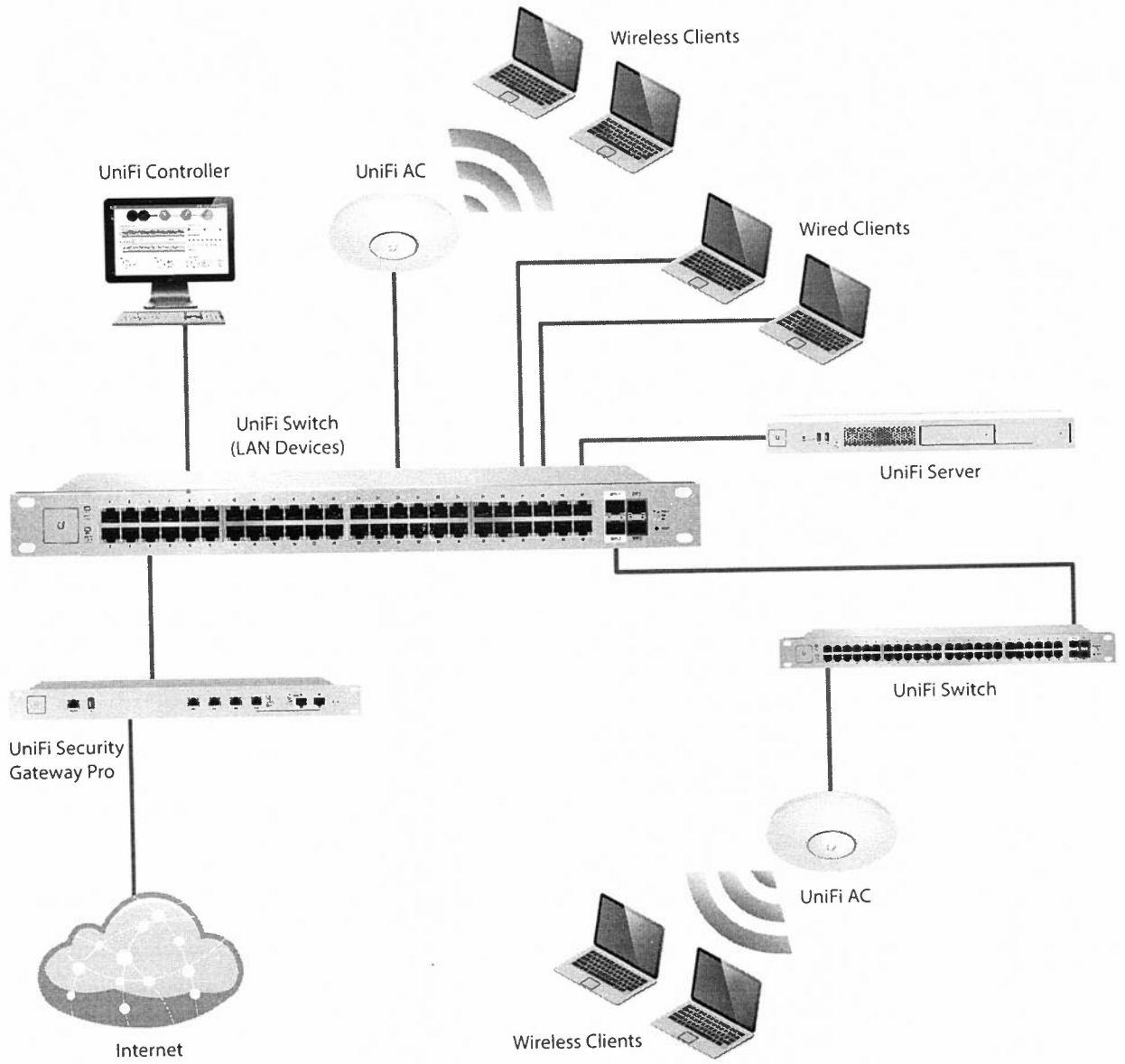
* Only the single-pack of the UAP-AC-EDU includes a PoE adapter.

Advanced Traffic Management	
VLAN	802.1Q
Advanced QoS	Per-User Rate Limiting
Guest Traffic Isolation	Supported
WMM	Voice, Video, Best Effort, and Background
Concurrent Clients	250+

Supported Data Rates (Mbps)	
Standard	Data Rates
802.11ac	6.5 Mbps to 1300 Mbps (MCS0 - MCS9 NSS1/2/3, VHT 20/40/80)
802.11n	6.5 Mbps to 450 Mbps (MCS0 - MCS23, HT 20/40)
802.11a	6, 9, 12, 18, 24, 36, 48, 54 Mbps
802.11g	6, 9, 12, 18, 24, 36, 48, 54 Mbps
802.11b	1, 2, 5.5, 11 Mbps



Loudspeaker Acoustics	
Sensitivity	94 dB (1W/1 m)
Maximum SPL	103 dB @ 1 m
Frequency Response	100 - 20,000 Hz
Type	Two-Way Speaker with Second-Order HP Filter

System Example



UniFi Switch Compatibility

The UniFi switches are compatible with UniFi Access Points and UniFi G3 Video Cameras, as detailed below.

AP/Camera Model	US-8	US-8-60W	US-8-150W	US-16-150W	US-24-250W	US-24-500W	US-48-500W	US-48-750W
UVC-G3			✓	✓	✓	✓	✓	✓
UVC-G3-AF	✓	✓	✓	✓	✓	✓	✓	✓
UVC-G3-DOME	✓	✓	✓	✓	✓	✓	✓	✓
UAP			✓	✓	✓	✓	✓	✓
UAP-LR			✓	✓	✓	✓	✓	✓
UAP-PRO	✓	✓	✓	✓	✓	✓	✓	✓
UAP-AC-LITE	✓	✓	✓	✓	✓	✓	✓	✓
UAP-AC-LR	✓	✓	✓	✓	✓	✓	✓	✓
UAP-AC-PRO	✓	✓	✓	✓	✓	✓	✓	✓
UAP-AC-M	✓	✓	✓	✓	✓	✓	✓	✓
UAP-AC-M-PRO	✓	✓	✓	✓	✓	✓	✓	✓
UAP-AC-IW*	✓	✓	✓	✓	✓	✓	✓	✓
UAP-AC-IW-PRO*	✓	✓	✓	✓	✓	✓	✓	✓
UAP-AC-HD	-	-	✓	✓	✓	✓	✓	✓

✓ Compatible with the UniFi switch



Requires Instant 802.3af Gigabit PoE Converter: INS-3AF-I-G  or INS-3AF-O-G 

Note:

* For the UAP-AC-IW and UAP-AC-IW-PRO, PoE passthrough is supported by all of the switches listed above except for models US-8 and US-8-60W.

Related Product Datasheets



UniFi Switch 8, UniFi Switch 8-60W:

dl.ubnt.com/datasheets/unifi/UniFi_Switch_8_DS.pdf



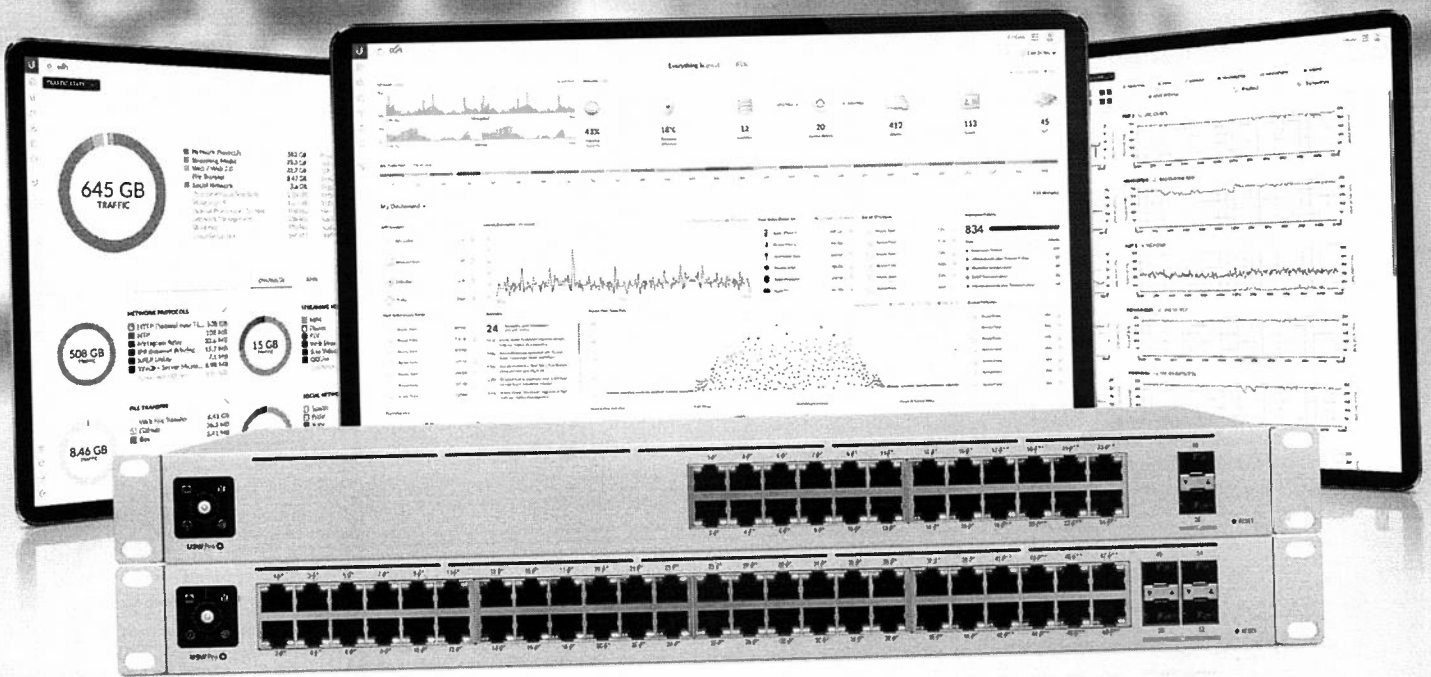
UniFi PoE Switches:

dl.ubnt.com/datasheets/unifi/UniFi_PoE_Switch.pdf

Specifications are subject to change. Ubiquiti products are sold with a limited warranty described at: www.ubnt.com/support/warranty
 ©2015-2019 Ubiquiti Networks, Inc. All rights reserved. Ubiquiti, Ubiquiti Networks, the Ubiquiti U logo, the Ubiquiti beam logo, and UniFi are trademarks or registered trademarks of Ubiquiti Networks, Inc. in the United States and in other countries. Apple and the Apple logo are trademarks of Apple Inc., registered in the U.S. and other countries. App Store is a service mark of Apple, Inc., registered in the U.S. and other countries. Google, Android, and Google Play are trademarks of Google Inc. All other trademarks are the property of their respective owners.



www.ubnt.com



802.3at/bt PoE Gigabit Switches with Layer 3 Features and SFP+

Auto-Sensing IEEE 802.3af/at/bt PoE

SFP+ Ports for 10G Links

Integrated Fans for Near-Silent Cooling

Models: USW-Pro-24-PoE, USW-Pro-48-PoE



Overview

Expand and power your network with the UniFi® Pro PoE Switch, part of the Ubiquiti® UniFi Enterprise System. It is available in two models:

- **USW-Pro-24-PoE** 24 RJ45 ports with 2 SFP+ ports
- **USW-Pro-48-PoE** 48 RJ45 ports with 4 SFP+ ports

Layer 3 Features

In addition to Layer 2 switching protocols and features, the UniFi Pro PoE Switch offers Layer 3 capabilities¹, such as inter-VLAN routing, static routing, and DHCP server functionality.

¹ Available with future firmware upgrade.

Near-Silent Cooling

The UniFi Pro PoE Switch can be located in any workspace. Its integrated fans have built-in PWM (Power Management) control, air ducts and covers, and temperature sensors for the best user experience.

Fiber Connectivity

SFP+ ports enable high-capacity uplinks of up to 10 Gbps, so you can directly connect to a high-performance storage server or deploy a long-distance uplink to another switch.

802.3bt PoE++

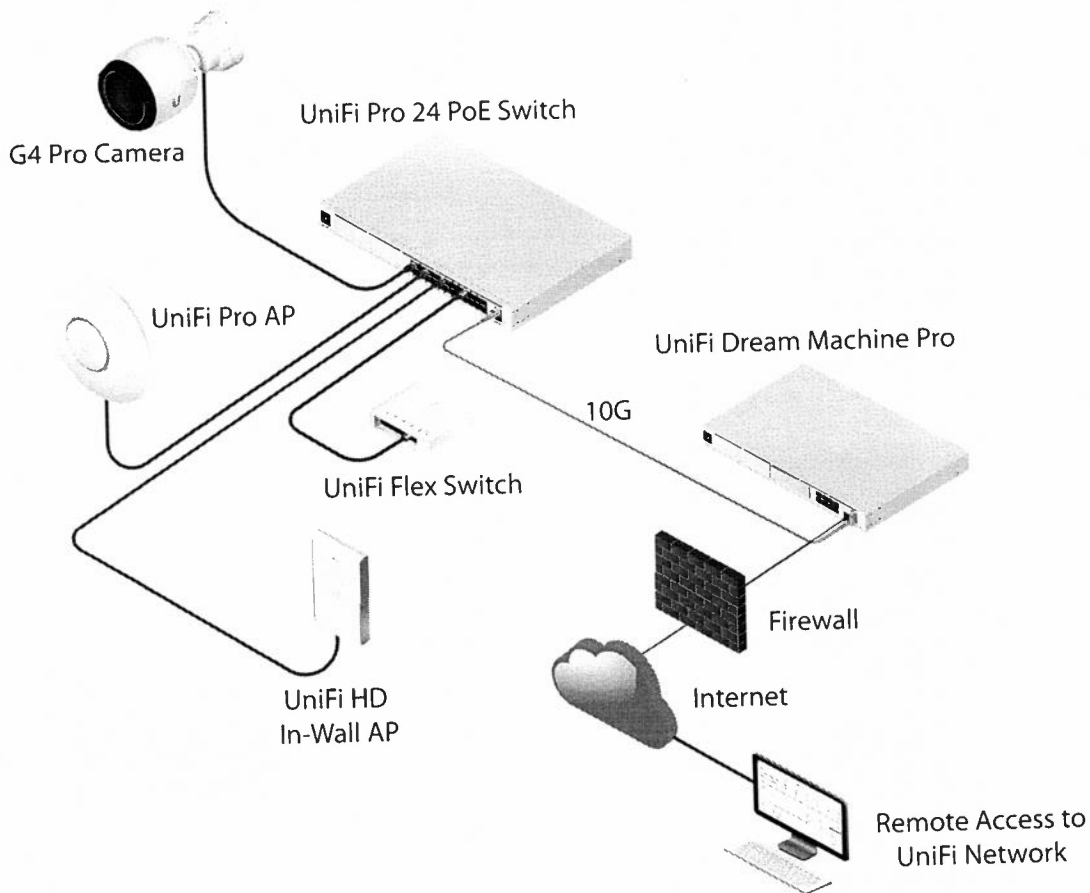
PoE support simplifies your network infrastructure and cabling. Eight ports offer 802.3bt PoE++ to provide up to 64W of power (per port) to your high-power PoE devices. Remaining ports offer 802.3af/at PoE.

Power Supply Redundancy

The UniFi Pro PoE Switch supports our PSU failover system, the UniFi SmartPower RPS, model USP-RPS. If the internal power supply unit fails, the proprietary USP RPS interface acts to provide redundant power for backup².

² Requires use of the USP-RPS (coming soon).

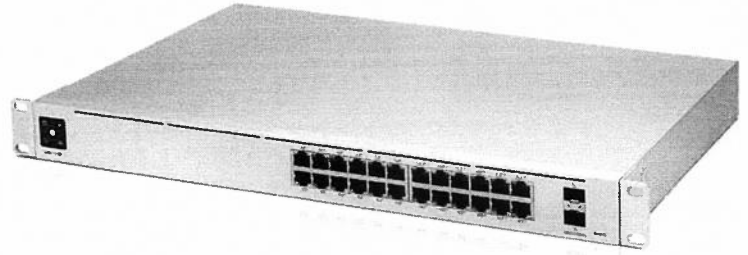
Deployment Example



The USW-Pro-24-PoE powers the UniFi Video Camera G4 Pro, UniFi AC Pro AP, and UniFi AC IW AP with 802.3af/at PoE, while delivering 802.3bt PoE++ to the USW-Flex.

UniFi Pro 24-Port PoE Switch

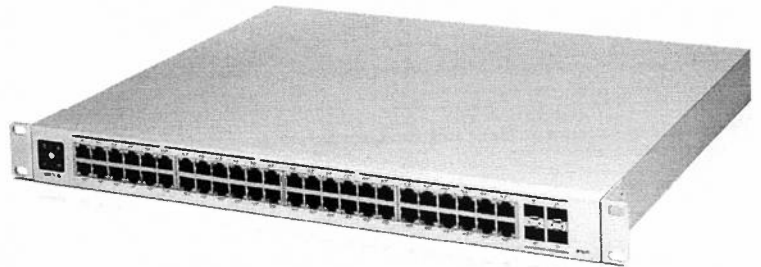
- (16) Gigabit RJ45 ports with 802.3af/at
- (8) Gigabit RJ45 ports with 802.3bt
- (2) 1/10G SFP+ ports
- 1U Rackmountable (hardware included)



USW-Pro-24-PoE

UniFi Pro 48-Port PoE Switch

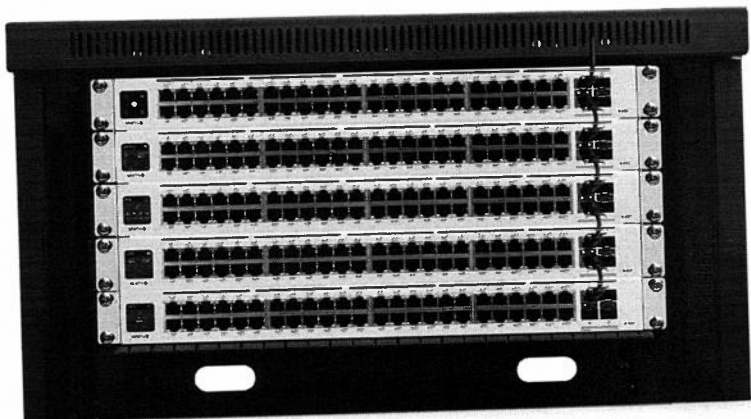
- (40) Gigabit RJ45 ports with 802.3af/at
- (8) Gigabit RJ45 ports with 802.3bt
- (4) 1/10G SFP+ ports
- 1U Rackmountable (hardware included)

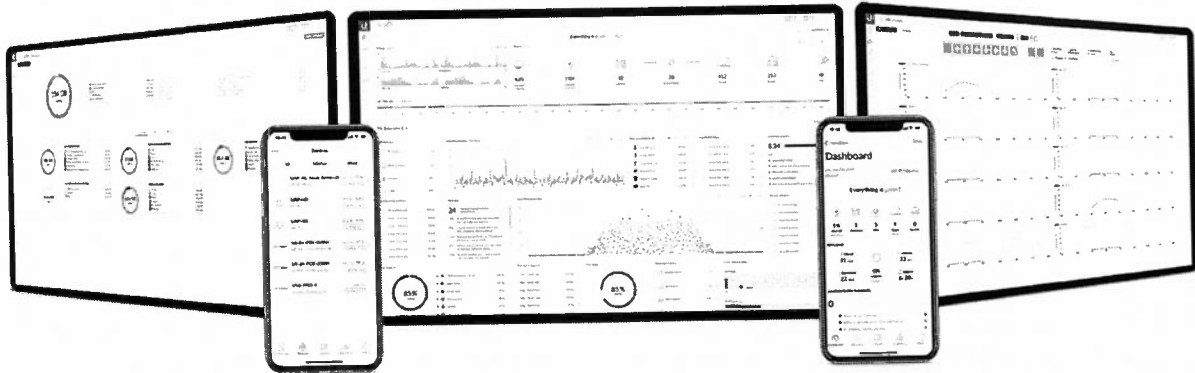


USW-Pro-48-PoE

Innovative Display

The 1.3" touchscreen displays status information for easy monitoring and quick troubleshooting.





Scalable UniFi Network Controller

Management Capabilities

The UniFi Network Controller can provision UniFi devices, map out networks, and quickly manage system traffic. Important network details are logically organized for a simplified, yet powerful, interface.

Network Overview

From a single pane of glass, view network topology and configuration, real-time statistics, and debugging metrics. Monitor your network's vitals and make on-the-fly adjustments as needed.

Deep Packet Inspection

Ubiquiti's proprietary Deep Packet Inspection (DPI) engine includes the latest application identification signatures to track which applications (and IP addresses) are using the most bandwidth.

Detailed Analytics

The UniFi Network Controller provides configurable reporting and analytics to manage large user populations and expedite troubleshooting. Advanced search and sorting capabilities make network management more efficient.

Multi-Site Management

A single controller running in the cloud can manage multiple sites: multiple, distributed deployments and multi-tenancy for managed service providers. Each site is logically separated and has its own configuration, maps, statistics, guest portal, and administrator accounts.

Switch Configuration

You can access any managed UniFi Switch through the UniFi Controller to configure a variety of features:

- Operation mode (switching, mirroring, or aggregate) per port
- Network/VLAN configuration
- Jumbo frame and flow control services
- Network settings
- Storm control setting per port
- Spanning tree configuration
- 802.1X control and RADIUS VLAN
- Debug terminal option for command-line interface

Switch Port Status

You can also view status information for each port:

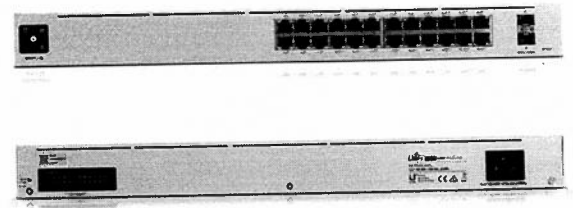
- Connection speed and duplex mode
- TX/RX data rates
- Network/VLAN setting

Software Features

The UniFi Network Controller software offers the following features:

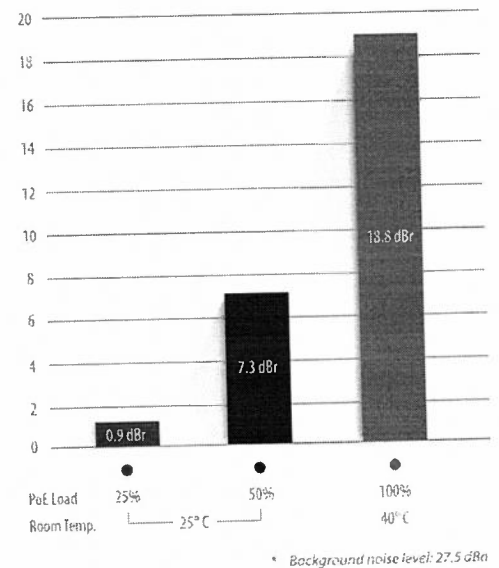
- Centralized configuration management (including configuration cloning)
- Auto-MDIX automatically adjusts as needed for straight through or crossover cable
- 802.1X (RADIUS) authentication and dynamic VLAN





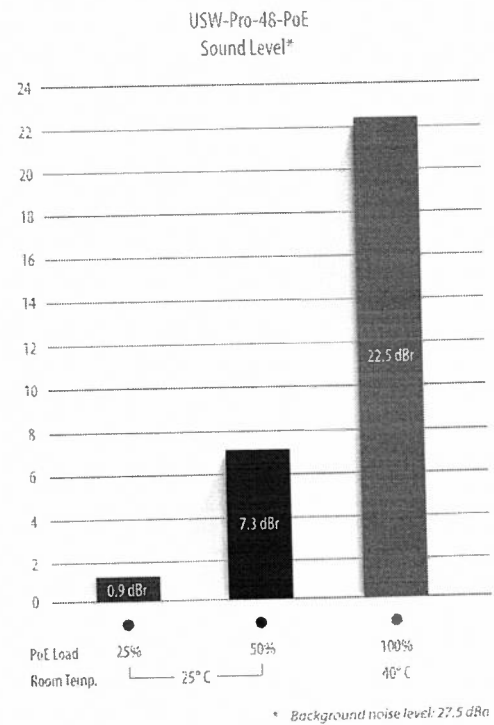
USW-Pro-24-PoE	
Dimensions	442.4 x 285.4 x 43.7 mm (17.42 x 11.24 x 1.72")
Weight With Brackets	4.30 kg (9.48 lb) 4.39 kg (9.68 lb)
Interfaces Networking Management	(24) 10/100/1000 RJ45 Ports (2) 1/10G SFP+ Ethernet Ports Ethernet In-Band
Total Non-Blocking Throughput	44 Gbps
Switching Capacity	88 Gbps
Forwarding Rate	65.472 Mpps
Power Method Universal Input USP RPS DC Input	100-240VAC, 50/60 Hz 52VDC, 7.69A; 11.5VDC, 2.61A
Power Supply	AC/DC, Internal, 450W
Voltage Range	100 to 240VAC
Max Power Consumption (Excluding PoE Output)	50W
LEDs System RJ45 Data Ports SFP+ Data Ports	Status PoE; Speed/Link/Activity Link/Activity
ESD/EMP Protection	Air: ± 16 kV, Contact: ± 12 kV
Shock and Vibration	ETSI300-019-1.4 Standard
Operating Temperature	-5 to 40° C (23 to 104° F)
Operating Humidity	10 - 90% Noncondensing
Certifications	CE, FCC, IC

USW-Pro-24-PoE
Sound Level*



PoE	
Total Available PoE	400W
PoE Interfaces Ports 1-16 Ports 17-24 802.3af/at 802.3bt	PoE+ IEEE 802.3af/at (Pins 1, 2+; 3, 6-) 60W PoE++ IEEE 802.3af/at/bt (Pins 1, 2+; 3, 6-) (Pair A 1, 2+; 3, 6-) (Pair B 4, 5+; 7, 8-)
Max. PoE Wattage per Port by PSE 802.3at 802.3bt	32W 64W
Voltage Range 802.3af Mode 802.3at/bt Mode	44-57V 50-57V

USW-Pro-48-PoE	
Dimensions	442.4 x 399.6 x 43.7 mm (17.42 x 15.73 x 1.72")
Weight With Brackets	6.25 kg (13.78 lb) 6.34 kg (13.98 lb)
Interfaces Networking	(48) 10/100/1000 RJ45 Ports (4) 1/10G SFP+ Ethernet Ports
Management	Ethernet In-Band
Total Non-Blocking Throughput	88 Gbps
Switching Capacity	176 Gbps
Forwarding Rate	130.944 Mpps
Power Method Universal Input USP RPS DC Input	100-240VAC, 50/60 Hz 52VDC, 11.54A; 11.5VDC, 5.22A
Power Supply	AC/DC, Internal, 660W
Voltage Range	100 to 240VAC
Max Power Consumption (Excluding PoE Output)	60W
LEDs System RJ45 Data Ports SFP+ Data Ports	Status PoE; Speed/Link/Activity Link/Activity
ESD/EMP Protection	Air: ± 16 kV, Contact: ± 12 kV
Shock and Vibration	ETSI300-019-1.4 Standard
Operating Temperature	-5 to 40° C (23 to 104° F)
Operating Humidity	10 - 90% Noncondensing
Certifications	CE, FCC, IC



PoE	
Total Available PoE	600W
PoE Interfaces Ports 1-40	PoE+ IEEE 802.3af/at (Pins 1, 2+; 3, 6-)
Ports 41-48 802.3af/at 802.3bt	60W PoE++ IEEE 802.3af/at/bt (Pins 1, 2+; 3, 6-) (Pair A 1, 2+; 3, 6-) (Pair B 4, 5+; 7, 8-)
Max. PoE Wattage per Port by PSE	
802.3at	32W
802.3bt	64W
Voltage Range	
802.3af Mode	44-57V
802.3at/bt Mode	50-57V

Specifications are subject to change. Ubiquiti products are sold with a limited warranty described at: ui.com/support/warranty. The limited warranty requires the use of arbitration to resolve disputes on an individual basis, and, where applicable, specify arbitration instead of jury trials or class actions. ©2019-2020 Ubiquiti Inc. All rights reserved. Ubiquiti, Ubiquiti Networks, the Ubiquiti U logo, the Ubiquiti beam logo, and UniFi are trademarks or registered trademarks of Ubiquiti Inc. in the United States and in other countries. Apple and the Apple logo are trademarks of Apple Inc., registered in the U.S. and other countries. App Store is a service mark of Apple Inc., registered in the U.S. and other countries. Android, Google, Google Play, the Google Play logo and other marks are trademarks of Google LLC. All other trademarks are the property of their respective owners.

JL031620



J.C. ARCHILLA COMERCIO DE CONFECCOES

RUA PONTA GROSSA, 521
CENTRO - 86.800-030
APUCARANA - PR
(43) 3033-3030

DANFE

DOCUMENTO AUXILIAR
DA NOTA FISCAL
ELETRÔNICA

0 - ENTRADA
1 - SAÍDA

1

Nº 000.000.032
SÉRIE 2
FOLHA 1/1



CHAVE DE ACESSO

4122 0327 4658 9800 0120 5500 2000 0000 3219 9999 9680

Consulta de autenticidade no portal nacional da NF-e

www.nfe.fazenda.gov.br/portal

ou no site da Sefaz Autorizadora

NATUREZA DA OPERAÇÃO
VENDA DENTRO DO ESTADO

PROTOCOLO DE AUTORIZAÇÃO DE USO

141220072110990 28/03/2022 15:25:33

INSCRIÇÃO ESTADUAL

90746891-72

INSCRIÇÃO ESTADUAL DO SUBSTITUTO

CNPJ

27.465.898/0001-20

DESTINATÁRIO / REMETENTE

NOME / RAZÃO SOCIAL

APUCARANA-CAMARA MUNICIPAL

CNPJ / CPF

78.299.815/0001-00

DATA DE EMISSÃO

28/03/2022

ENDEREÇO

PRAÇA JOSE DE OLIVEIRA ROSA, SN - CENTRO CIVICO

BAIRRO / DISTRITO

CENTRO

CEP

86.800-970

DATA DA SAÍDA

28/03/2022

MUNICÍPIO

APUCARANA

UF

PR

FONE / FAX

(43) 3420-7000

INSCRIÇÃO ESTADUAL

HORA DA SAÍDA

15:25:24

CÁLCULO DO IMPOSTO

Table with columns: BASE DE CÁLCULO DO ICMS, VALOR DO ICMS, BASE DE CÁLC. DO ICMS S.T., VALOR DO ICMS ST, VALOR DO ICMS DESONERADO, VALOR TOTAL DOS PRODUTOS, VALOR DO FRETE, VALOR DO SEGURO, DESCONTO, OUTRAS DESPESAS ACESSÓRIAS, VALOR DO IPI, VALOR APROX TRIB, VALOR TOTAL DA NOTA.

TRANSPORTADOR / VOLUMES TRANSPORTADOS

Table with columns: NOME / RAZÃO SOCIAL, FRETE POR CONTA, CÓDIGO ANTT, PLACA VEÍCULO, UF, CNPJ / CPF, ENDEREÇO, MUNICÍPIO, UF, INSCRIÇÃO ESTADUAL, QUANTIDADE, ESPÉCIE, MARCA, NUMERAÇÃO, PESO BRUTO, PESO LÍQUIDO.

Main product table with columns: CÓDIGO PRODUTO, DESCRIÇÃO DO PRODUTO, NCM, CSO SN, CFOP, UNID, QUANT, VALOR UNIT, TOTAL, B.CÁLC ICMS, VALOR ICMS, VALOR IPI, ALIQ ICMS, ALIQ IPI.

COMISSÃO DE RECEBIMENTO DE BENS
Atesto, para os devidos fins que foram recebidos os materiais e/ou serviços constantes do presente documento e em proveito desta Câmara Municipal.
Em 28 de Março de 2022
Nome 1: [Signature]
Nome 2: [Signature]

DADOS ADICIONAIS

INFORMAÇÕES COMPLEMENTARES

DOCUMENTO EMITIDO POR ME OU EPP OPTANTE PELO SIMPLES NACIONAL. NÃO GERA DIREITO A CRÉDITO FISCAL DE IPI. EMPENHO 94/2022 PREGÃO 03/2022 PROCESSO ADM 06/2022 CONTRATO 05/2022 BANCO DO BRASIL 001 AG 8571-5 C/C 370-0 - CHAVE PIX 27.465.898/0001-20

RESERVADO AO FISCO

RECEBEMOS DE J.C. ARCHILLA COMERCIO DE CONFECCOES OS PRODUTOS E/OU SERVIÇOS CONSTANTES NA NOTA FISCAL ELETRÔNICA INDICADA AO LADO. EMISSÃO: 28/03/2022 VALOR TOTAL: 22410 DESTINATÁRIO: APUCARANA-CAMARA MUNICIPAL, PRAÇA JOSE DE OLIVEIRA ROSA, SN - CENTRO CIVICO.

DATA RECEBIMENTO

IDENTIFICAÇÃO E ASSINATURA DO RECEBEDOR

NF-e
Nº 000.000.032
SÉRIE 2

**Comprovante de transferência eletrônica disponível**

Via Internet Banking CAIXA

Tipo de TED:	TED para terceiros
Conta origem:	0379 006 00000001-0
Tipo de conta:	01 - Conta Corrente
Tipo de pessoa:	JURÍDICA
Nome:	CAM MUN DE APUCARANA
CPF/CNPJ:	78.299.815/0001-00

Banco:	001 - BCO DO BRASIL S.A. 00000000 - 00000000
Tipo de conta:	01 - Conta Corrente
Conta destino:	8571 / 00000000370-0
Tipo de pessoa:	JURÍDICA
Nome:	J C ARCHILLA COM DE CONFECÇOES
CPF/CNPJ:	27.465.898/0001-20
Valor:	R\$ 22.410,00
Valor da tarifa:	R\$ 0,00
Finalidade:	10 - Crédito em Conta
Identificação da operação:	J C ARCHILLA NF 32
Histórico:	J C ARCHILLA

Data de débito:	13/04/2022
Data / Hora da operação:	13/04/2022 14:27:03

Código da operação:	00150428
Chave de segurança:	VSWLME77M8T74N7X

DEBITO REALIZADO COM SUCESSO. A PREVISAO DO CREDITO NA CONTA DESTINO E DE 60 MINUTOS.

Operação realizada com sucesso conforme as informações fornecidas pelo cliente.

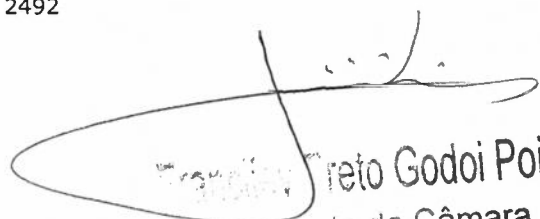
Autorizo a CAIXA a debitar o valor da tarifa vigente de TED na data agendada.

SAC CAIXA: 0800 726 0101

Pessoas com deficiência auditiva: 0800 726 2492

Ouvidoria: 0800 725 7474

Alô CAIXA: 0800 104 0 104


Paulo Roberto Godoi Poim
Presidente da Câmara
Municipal de Apucarana